

Alston Road Tooting, SW17 0TS

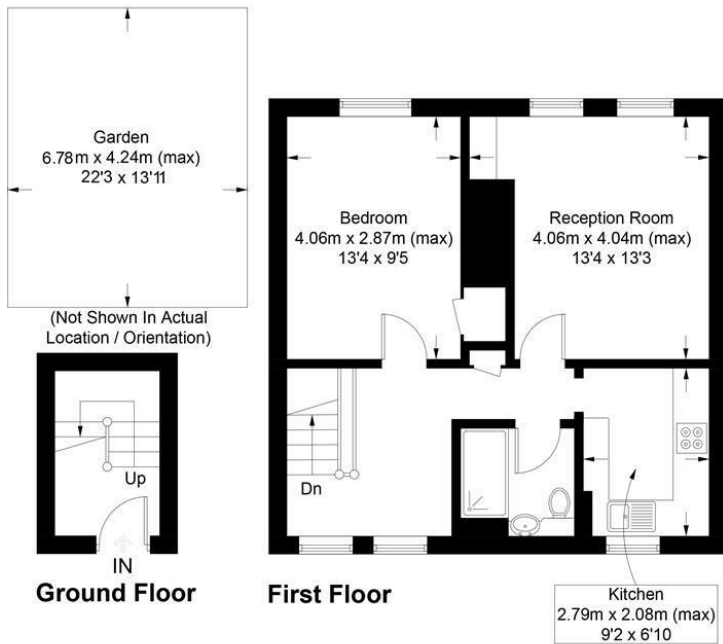
£350,000 Leasehold



A superbly presented one double bedroom purpose-built first floor maisonette located on a sought after tree-lined residential road close to local amenities on Tooting High Street and Tooting Broadway Underground Station. The property further benefits from having a newly fitted kitchen and boiler, spacious reception with a view over Fountain Recreation Ground, good sized double bedroom and fitted bathroom. Further benefits include a private garden, unallocated parking and is conveniently located for St George's Hospital.

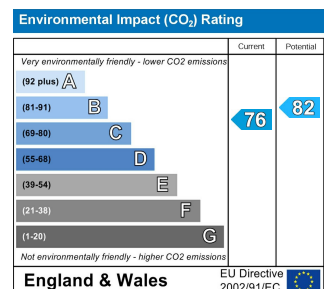
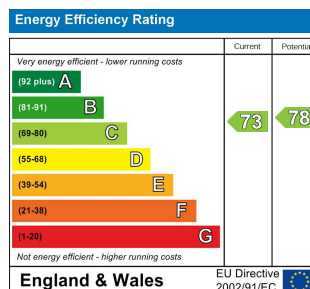
Wetheral Court, SW17

Approximate Gross Internal Area = 53.9 sq m / 580 sq ft



This floor plan is for representation purposes only and is not drawn to scale.
The Gross Internal Area includes outbuildings shown on the plan.
Whilst every attempt has been made to ensure the accuracy of the plan measurements of doors, windows and rooms are approximate only and should be checked before making any decisions reliant upon them.
Copyright Bespokeplans.co.uk (ID701247)

- Spacious Maisonette
- One Double Bedroom
- Private Garden
- First Floor
- Newly Fitted Kitchen
- Ideal First Time Purchase
- Parking Available



For Free Mortgage Quote and Best Mortgage Rates, call an Ellisons Mortgage Advisor on 020 8544 0518



Although these particulars are believed to be correct, their accuracy is not guaranteed and they do not form part of any contract.

Celebrating 30 years of successful Sales and Lettings in Merton

